



DEVELOPERS

# im3® CR8 VET

## FEATURES & BENEFITS

- ✓ Highest resolution 40 LP/mm theoretical, with 25 LP/mm true resolution. Which is up to double the TRUE resolution of other CR & DR Systems
- ✓ Plates sizes 0 – 6, flexible thin plates allow for easy positioning
- ✓ 2 x plate slots, providing parallel scanning for fast sequential scanning of imaging plates
- ✓ Adjustable resolutions allows for fast scanning times. Up to 4 x size 2 image plates can be read in as little as 25 seconds
- ✓ Possible to get a full mouth scan of large dog with only 6 scans
- ✓ Developed for requirements in large veterinary practices & dental clinics



Cat. Code  
X8101

*With its two slot scanning design, the CR 8 offers an even faster work flow than ever before!*



*2 x plate slots, takes all sizes, for fast sequential scanning of image plates*



*Touch display, patented PCS technology for excellent image quality*



*Automatically erases your imaging plates ready for reuse*

## SPECIFICATIONS

RESOLUTION	OPERATING TIME	PLATES SIZES
25 LP/mm actual (40 LP/mm theoretical)	8 sec	0 – 6 plus R3
NETWORK	WARRANTY	SOFTWARE
Single PC or Windows Server* database install with workstations PC's	2yrs	Vet Exam Pro
DIMENSIONS Height x Width x Depth	TECHNICAL SUPPORT	DICOM COMPLIANT
38 x 23 x 28 cm Weight: 8kg	✓	✓

\*Windows Server 2019 or greater required





## POSITIONING

## iM3 Complete X Ray

Cat. Code: X8500

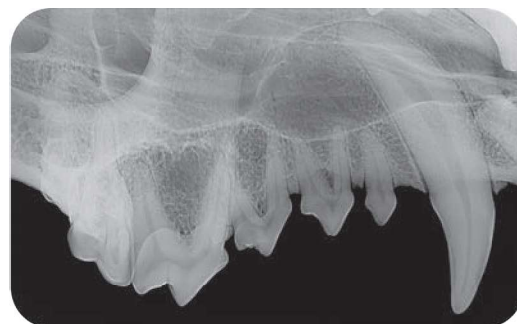
### 1 ANGLE GUIDES & ADJUSTABLE BISECTING ANGLE GUIDE

Angles of X-ray beam effect shape and size of shadow. To isolate detail for examination and avoid squashed or stretched images, use our pre-set guides which provide Angle, Distance, and Position. Set-angle positioning guides, sizes 30°, 45°, and 55° and now, New 70° angles provide the option of an alternate canine and incisor projection which is useful for some breeds.



### 3 BITE GUARDS

Protect your plates against any bite marks or damage to achieve the ideal scan. Polycarbonate IP bite protector plate holders, sizes 2, 4 and 5.

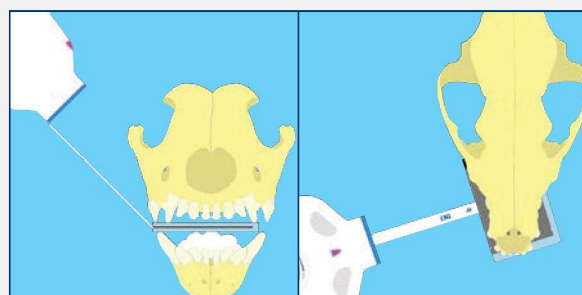


**FULL MOUTH  
OF LARGE DOG  
COMPLETED IN ONLY  
6 SCANS**

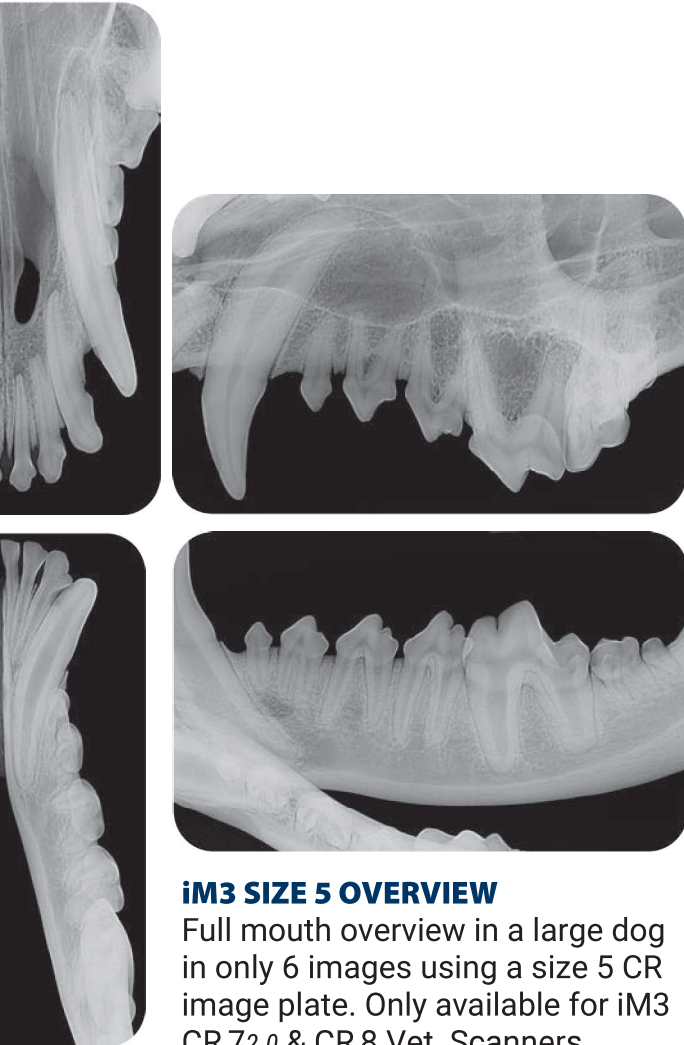
## Positioning X-Ray Kit

Cat. Code  
X8500

**iM3 Positioning kit** for use in conjunction with our **CR 72.0** and **CR 8** scanners. As animals don't have an arch within the roof of their mouths, it is not easy to get the right angle, so iM3 has come up with the solution in the form of a positioning kit, which takes the guess work out of dental X-ray. Our present guides provide relative: angle, distance and position. See our *iM3 How to use video here or on the website, for a step by step guide.*



# Positioning Kit



## iM3 SIZE 5 OVERVIEW

Full mouth overview in a large dog in only 6 images using a size 5 CR image plate. Only available for iM3 CR 72.0 & CR 8 Vet Scanners

2

## POSITIONING POSTERS

Dog, cat and rabbit positioning posters have larger and easy-to-follow illustrations.

