

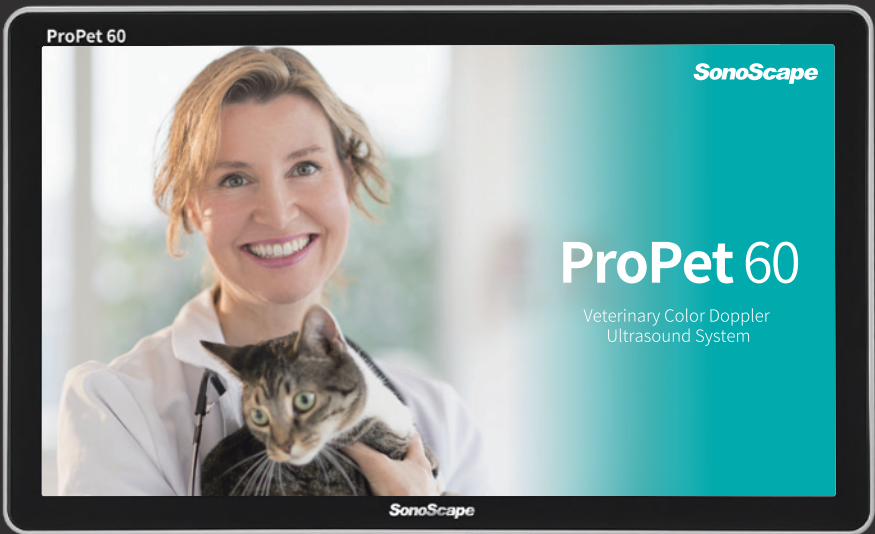


SonoScape

# Outstanding Performance and Value

## ProPet 60

Veterinary Color Doppler Ultrasound System



SonoScape Medical Corp.  
2F, 12<sup>th</sup> Building, Shenzhen Software Park Phase II, Keji Middle 2<sup>nd</sup> Road,  
Nanshan District, Shenzhen 518057, Guangdong, China  
Tel: +86-755-26722890 Fax: +86-755-26722850  
Email: market@sonoscape.net www.sonoscape.com

© 2022 SonoScape Medical Corp.  
All rights are reserved.  
SonoScape Medical reserves the right to change the above  
information and discontinue any product at any time  
without prior notification and will not be liable for any  
consequences resulting from the use of this publication.

U-P6020221021



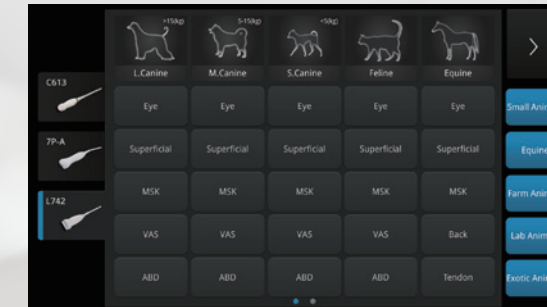
## ProPet 60

All creatures are great and small. Animals are the closest friends and most trusted partners of human beings. SonoScape has always been devoted to exploring the dedicated diagnostic imaging solutions for veterinary needs. Starting a new phase in ultrasound imaging, SonoScape rolls out the brand new ProPet series to provide professional veterinary solutions catering to a wide variety of species ranging from small pets to large animals.

Seeing veterinarians' key wants and demands, ProPet 60, as a cost-effective ultrasound solution, provides a delicate combination of outstanding clinical precision, elevated productivity and thoughtful workflow for veterinarian's everyday practice. With the full range of HD probes, it has all your need for abdominal, reproductive, small parts, orthopaedic, and even cardiac and thoracic imaging with maximized value.

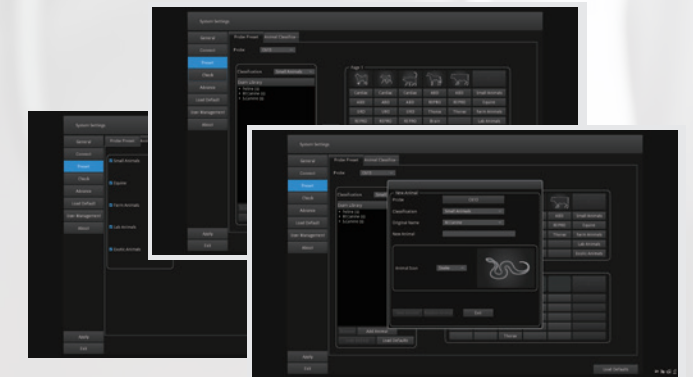
## Specialized Software for Veterinary Care

The ProPet is designed for veterinarians to guarantee a very high level of professionalism in all vet applications. With the vet-dedicated software they can get an intuitive operation and accurate diagnosis in the fastest possible way.



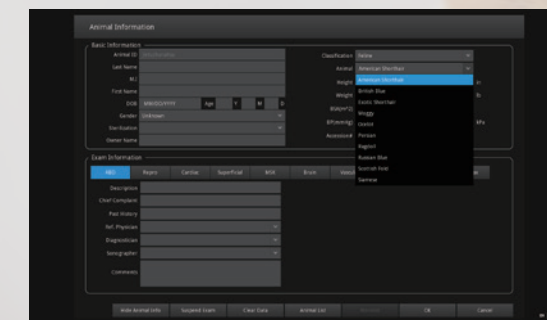
### Flexible and Intuitive Veterinary Exam Mode

Makes it easy to choose from a list of animal types, transducers as well as presets combination in one click.



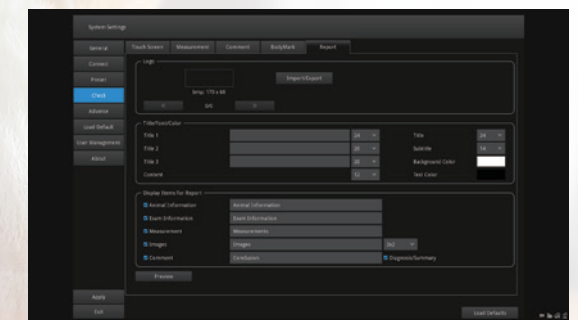
### User-definable Animal Classification

Veterinaries is able to user-define animal type and corresponding graphic exam icon in system setting for specific veterinary application.



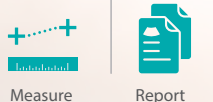
### Dedicated Animal Patient Information Input Interface

Is designed specifically for veterinary environment with fields for animal's name, species, breed and castration status.



### Professional Veterinary Measurement and Report

Covers a full range of applications like reproduction, cardiac and MSK, etc, providing necessary tools to the user's needs, including Cornell & BSA animal specific formulas.



## Comprehensive Veterinary Bodymarks and Annotations

Covers 200+ veterinary bodymarks and 120+ veterinary annotations including small animals, equine, farm animals, lab animals and exotic animals with more than 20 species.



**200+**  
Veterinary Bodymarks



**120+**  
Veterinary Annotations



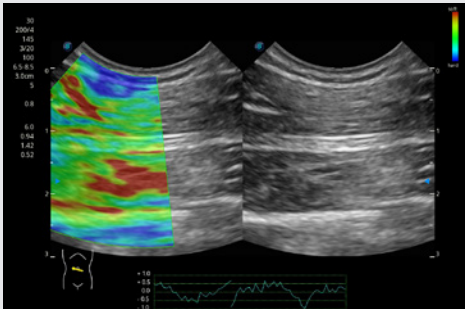
**20+**  
Species





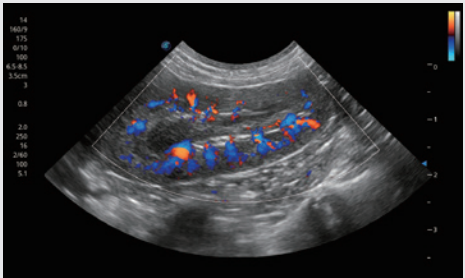
# Outstanding Performance in Abdomen and Superficial Assessment

Clinical confidence requires high performance and advanced tools. ProPet is designed with advanced tools for abdomen and superficial application helping veterinarians in everyday clinical practice like never before.



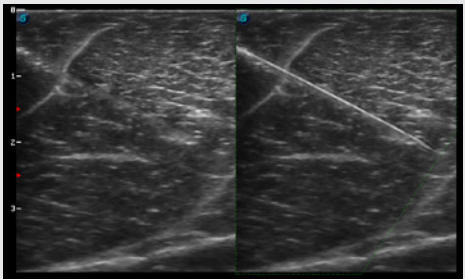
### Strain Elastography

Offers a real-time tissue stiffness assessment displayed as a color map to detect potential abnormalities within normal tissue. Available on linear, convex, micro-convex, and endo-cavity transducers to cover a wide range of applications.



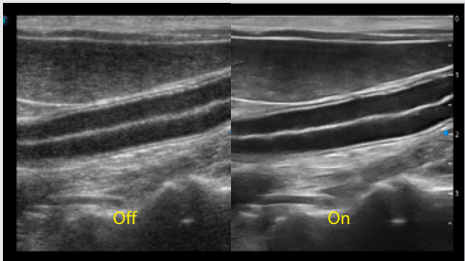
### Vis-Needle

Reveals needle location within animal anatomy with no distortion when performing interventions like nerve blocks and tissue biopsies.



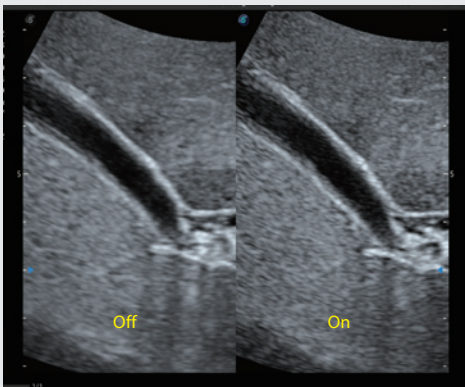
### SR Flow

Enables a dynamic and vivid Doppler display with high sensitivity while ensuring a realistic evidence for detection of slow flows.



### μ-Scan+

Is delicately engineered to reduce speckles while improve image uniformity and enhance border continuity, providing authentic presentation of details and enhanced lesion display.



### HQ Scan

A newly develops to enhance the contrast and whole image structure with better details.

# Professional Abdomen & Superficial Probes



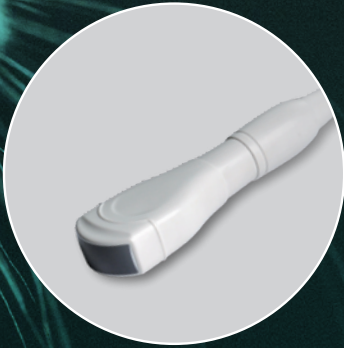
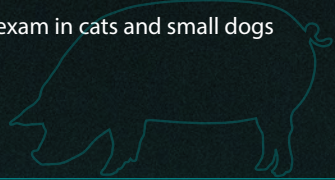
### L742

Ultra HD linear probe  
Superior, detailed superficial, small parts, and tendon scans  
High definition abdominal exams



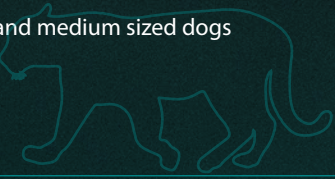
### C613

High frequency micro convex probe  
Abdominal probe for cats and dogs  
Small foot print enables basic cardiac exam in cats and small dogs



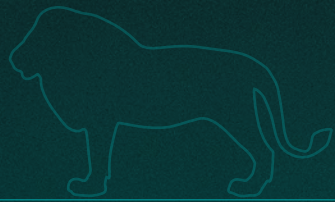
### C322

Low frequency micro convex probe  
General ultrasonography  
Abdominal and basic cardiac in giant and medium sized dogs



### 3C-A

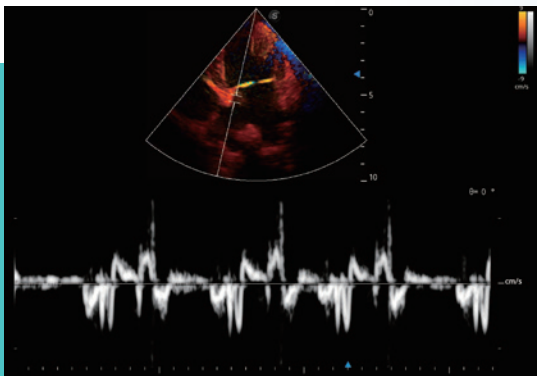
Ultra HD convex probe  
High definition abdominal exams





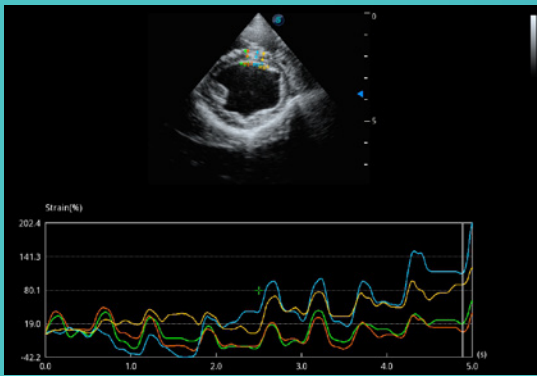
# Elevating Cardiac Care with a Complete Trust

Equipped with SonoScape’s full range of phased array probes (7P-A, 2P1), sophisticated processing technology and state-of-the-art cardiac tools, ProPet series offer veterinarians a comprehensive assessment of cardiac and myocardial functions.



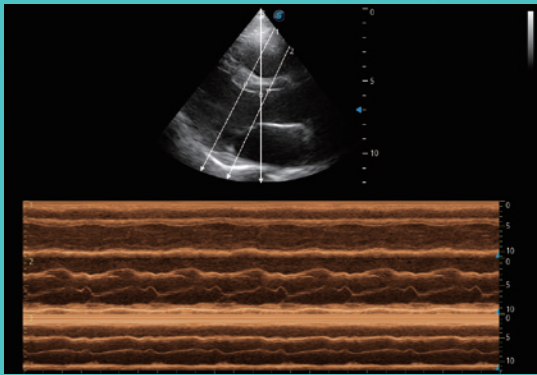
### TDI

Uses myocardial Doppler frequency shifts to quantify myocardial tissue motion, with red and blue representing the different directions of wall movement.



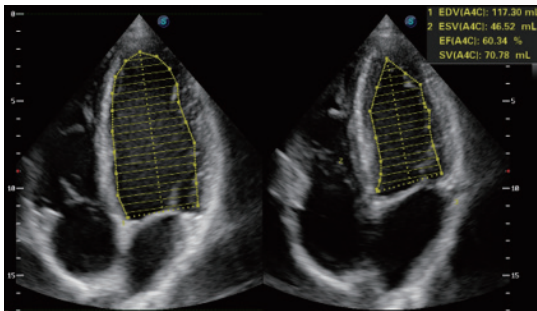
### MQA

Precise left ventricular wall motion detection with globally 2D speckle patterns tracking provides accurate quantitative analysis including strain, strain rate, displacement, velocity, etc. on myocardial walls.



### AMM

Collects data with up to three sampling lines at one time to implement detailed assessment on wall motion. It greatly improves the reproducibility and accuracy of left ventricular measurement.



### Auto EF

Automatic ejection fraction calculation based on left ventricular wall tracing and Simpson's rule saves time and efforts compared with manual measurement.

## Professional Cardiology Probes



### 7P-A

Mid-frequency phased array probe  
Cardiac probe for cats and medium sized and small dogs



### 2P1

Ultra HD low frequency phased array probe  
High definition echocardiography for giant and medium sized dogs



# Smooth Experience for Better User-machine Interaction

Veterinarians’ work can be burdensome due to the daily ins and outs. SonoScape strives to prepare veterinarians as much as possible so they can focus on what they are passionate about. Better user experience always was, and always will be, our goal.

## Streamlined Workflow

### Sono-Drop

Provides a fast and convenient ultrasound image transmission between ultrasound machine and smart devices.



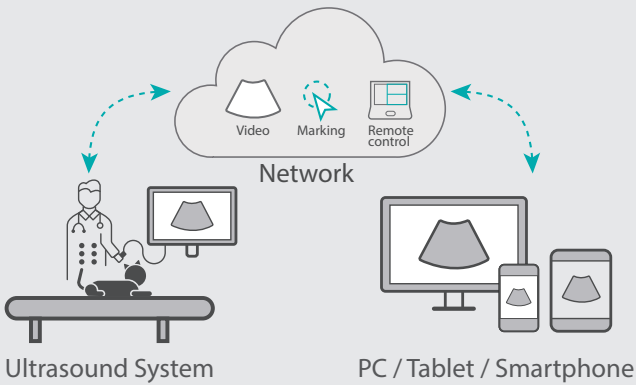
### Sono Assistant

Guides clinicians through the entire exam and provides customizable scanning protocol helping streamline workflow while increasing standardization.

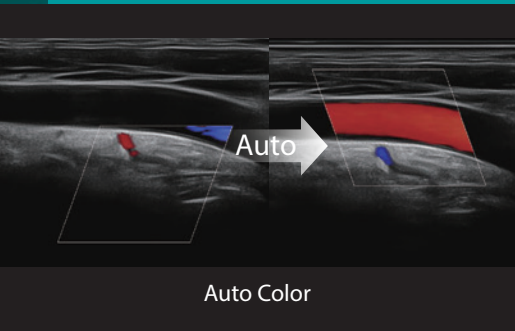


### Sono-Synch

Makes it possible to connect ultrasound with smart devices, laptop computer or even another ultrasound system in a remote distance and perform remote medical consultation and tutorial.

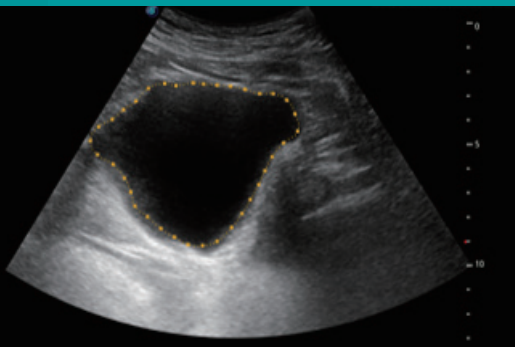


## Smart Tools



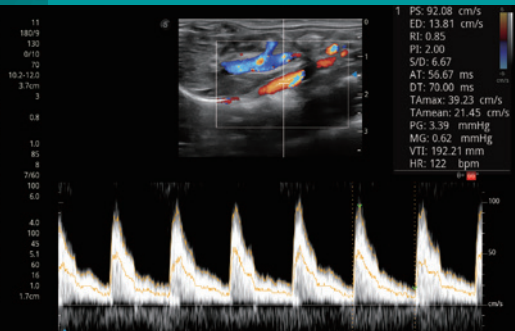
### Auto Optimization

Provides intuitive one touch 2D, Color and Dopple image optimization through intelligent real-time algorithms.



### Auto Bladder

One key bladder wall tracing and volume measurement from Auto Bladder can efficiently provide more accurate contour and results, which is not subject to the bladder shape and size.



### Auto Trace

It can trace the PW/CW spectrum automatically, which help doctors make measurement easily and conveniently.



# Comfort and Productivity Lie on Design



Large Size Monitor and Touch Screen



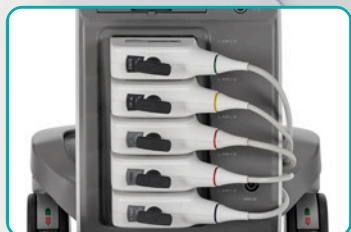
Multi-stage Temperature Control  
Gel Warmer



Dust-proof and Protection Bag



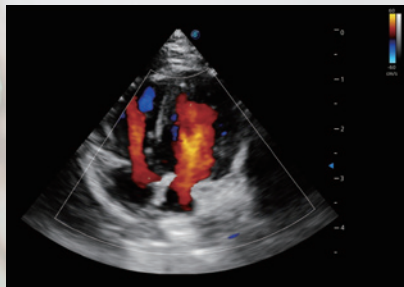
Large Capacity Built-in Battery



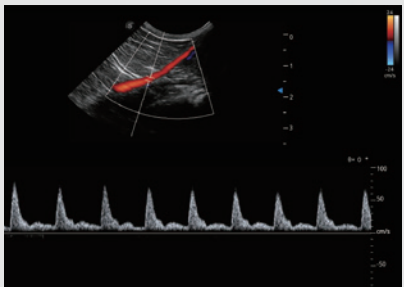
Five Probe Connectors

# Stunning Images within Reach

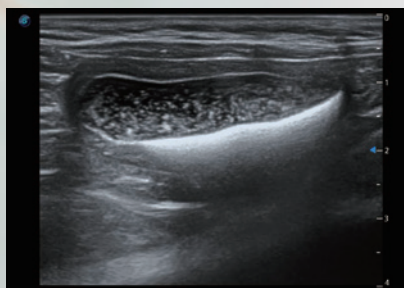
ProPet 60 combines the latest intelligence software and single crystal probe technology to deliver exceptional images, defining the subtlest pathology, from great danes to tiny exotics and significantly delivers better clinical outcomes.



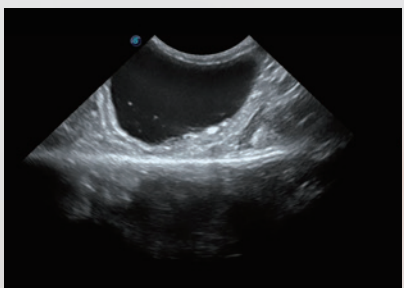
Canine Cardiac Blood Flow



PW Mode of Feline Iliac Artery



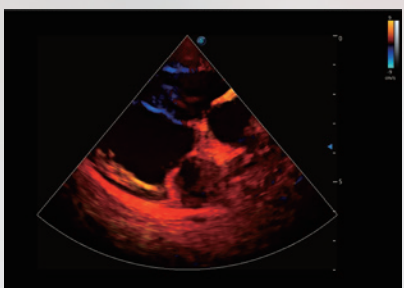
Bladder Deposit



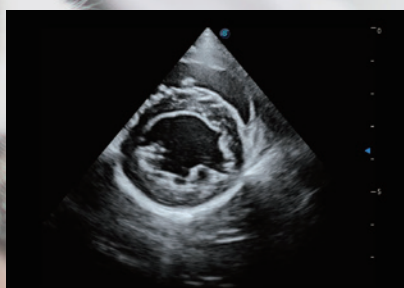
Bladder Deposit



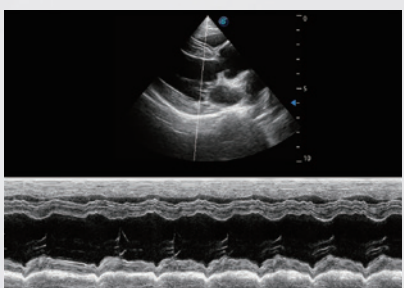
Canine Renal Blood Flow



TDI Mode of Canine Heart



Short Axis View of Papillary Muscle



M Mode of Canine Heart